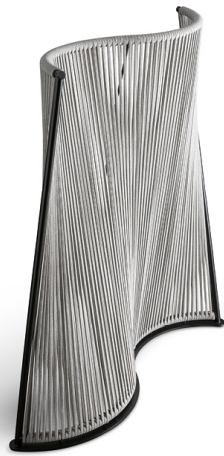


# BONALDO

## Wave

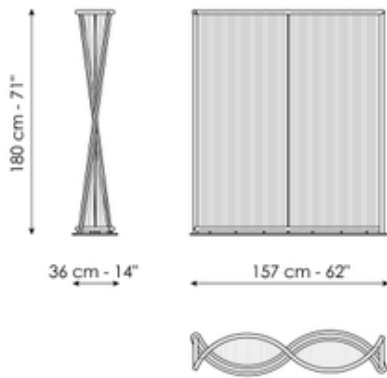
Designer: Marconato and Zappa



The shape of the Wave screen is inspired by the gentle movement of waves on the sea. With its curved metal frame and divider made of sand-coloured braided rope, Wave outlines and separates the space, rewriting the boundaries of the environment in which it is inserted and creating ever new scenography depending on its position. With Wave, the screen becomes a work of art that creates privacy without weighing down the room.



# Data sheet



## Wave

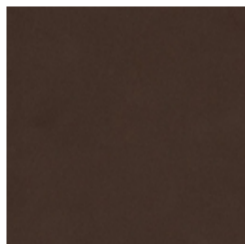
Width: 36cm

Depth: 157cm

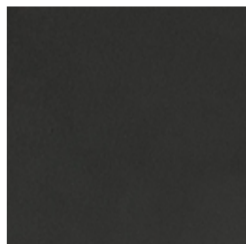
Height: 180cm

# Finishes

## Frame



**Painted metal**  
Mat bronze



**Painted metal**  
Mat lead

---

Materials, fabrics, leathers, colors and finishes are approximate and may slightly differ from actual ones. You can find the complete collection of Bonaldo fabrics and leathers on the website <https://bonaldo.biz>