

# BONALDO

## Vague mirror

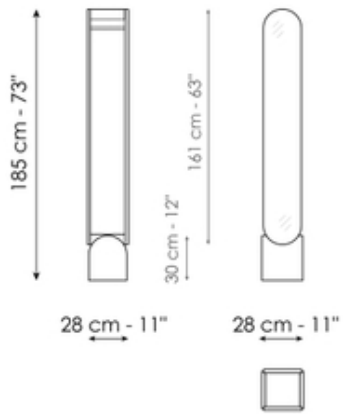
Designer: Roberto Paoli



The Vague mirror combines a floor-based mirror and a coat hanger in a single small space. The mirror has the concrete base that is typical of the Vague collection, from which two panels emerge vertically, the front section mirrored and the rear in wood, joined together by a metal frame and a rod on which to hang clothes, combining the function of reflection with the practicality of a clothes hanger.



# Data sheet



## Vague mirror

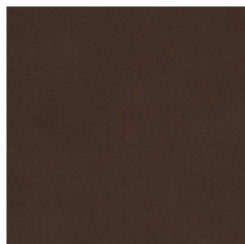
Width: 28cm

Depth: 28cm

Height: 185cm

# Finishes

## Frame



**Painted metal**  
Mat bronze



**Painted metal**  
Mat lead

---

## Back panel



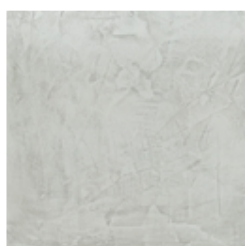
**Lacquered wood**  
Mat bronze



**Lacquered wood**  
Mat lead

---

## Base



**Concrete**  
Travertin look



**Concrete**  
Grey

---

Materials, fabrics, leathers, colors and finishes are approximate and may slightly differ from actual ones. You can find the complete collection of Bonaldo fabrics and leathers on the website <https://bonaldo.biz>