

BONALDO

Groove

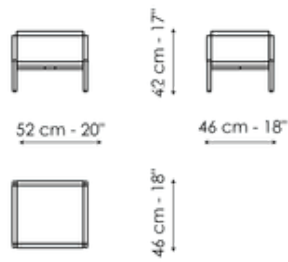
Designer: Mauro Lipparini



The elements of the system have been designed with a focus on the linear, graphic purity created by the wooden modules that form the drawers, sides and top, resting on a metal structure that serves as a base. The simple geometry of the bedside tables and dresser set emphasises their practical function: this is mainly the case with the grooves on the front section, which are particularly highlighted by the design and serve as handles without being visible.

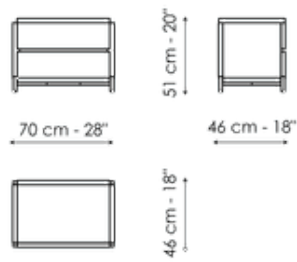


Data sheet



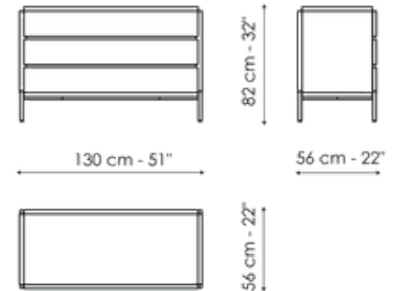
Bedside table with one drawer

Width: 52cm
Depth: 46cm
Height: 42cm



Bedside table with two drawers

Width: 70cm
Depth: 46cm
Height: 51cm

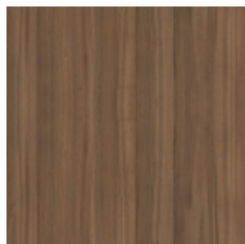


Drawer chest

Width: 130cm
Depth: 56cm
Height: 82cm

Finishes

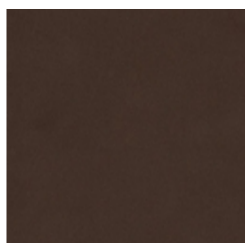
Frame



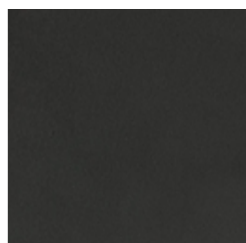
Veneered wood
Walnut Canaletto

Base

Painted metal
Supreme anthracite



Painted metal
Mat bronze



Painted metal
Mat lead



Painted metal
Mat pearl gold

Materials, fabrics, leathers, colors and finishes are approximate and may slightly differ from actual ones. You can find the complete collection of Bonaldo fabrics and leathers on the website <https://bonaldo.biz>