



The Place for Ideas

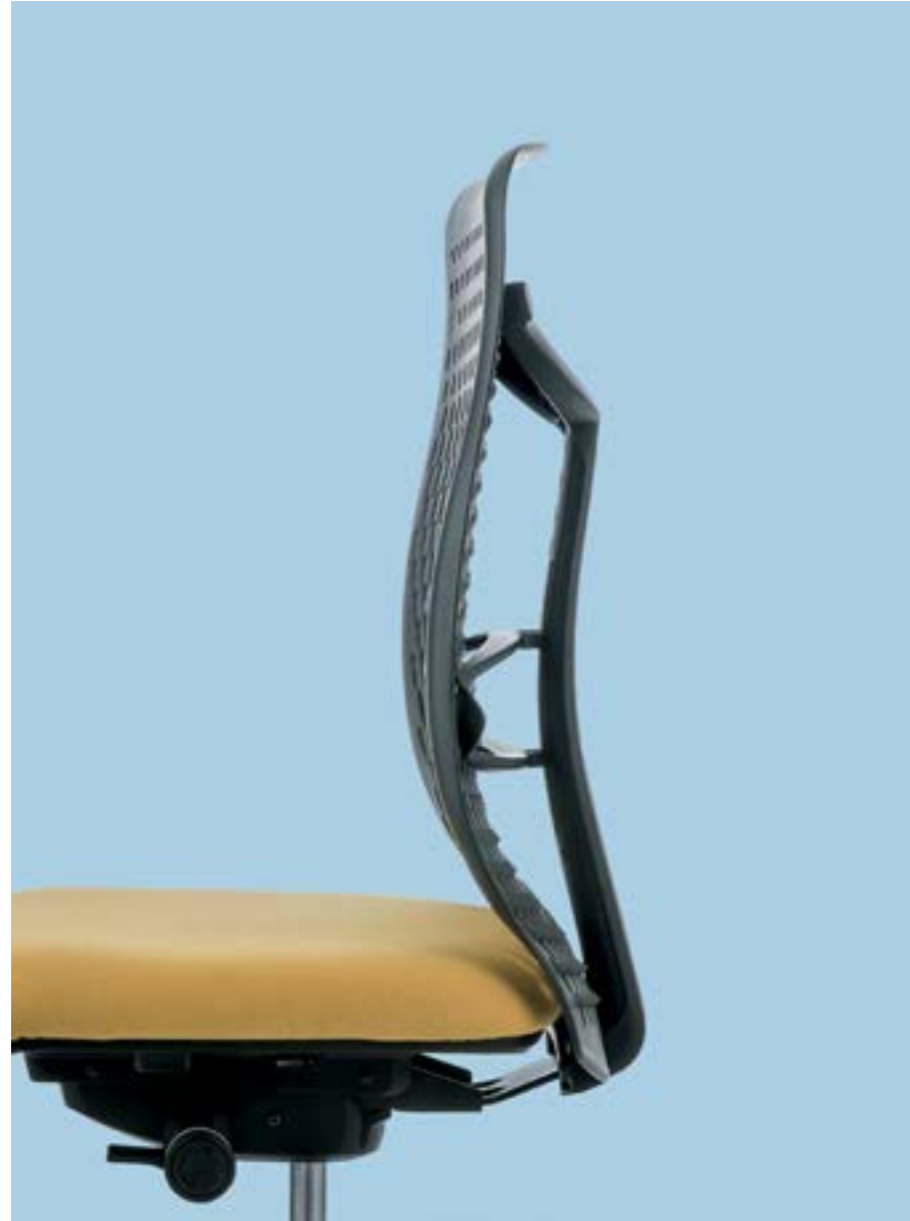
# SMARTBACK

Design by Luxy R&D

Estetica accattivante, funzionalità vincente. SmartBack è la seduta dall'aspetto energico che ben si adatta a contesti bisognosi di leggerezza e ariosità. La struttura a griglia in poliammide caricato con fibra di vetro rende lo schienale traspirante e la tecnologia flessibile le permette di seguire i movimenti del corpo. Pensata per accompagnare chi ne fa uso attraverso una lunga giornata lavorativa, SmartBack è la soluzione adatta a chi cerca un posto comodo dove far crescere le proprie idee.

Captivating aesthetics and winning functions. SmartBack exudes energy, making it perfect for spaces in need of lightweight vibes. The mesh-inspired structure—in polyamide loaded with fiberglass—makes it breathable while the flexible technology allows it to follow the body's movements. Designed for long days, SmartBack is a perfect for those in need of a space for their ideas to flourish.





**SMARTBACK**  
Modello PK1/ PK1 model  
Dettaglio schienale/ Backrest detail





**SMARTBACK**

Modello PK4/ PK4 model



1.



2.



3.

- 1. Regolazione in profondità di 50 mm/ Depth adjustment of 50 mm.
- 2. Pad soft touch con rotazione di 360°/ Soft touch pad with 360° rotation.
- 2. Bracciolo 2D/ 2D armrest.



1.

1. Regolazione in altezza con pistone a gas ammortizzato 130 mm/ Height adjustment with amortized gas piston 130 mm stroke.
2. Syncro-Tilt oscillante con 20°schienale e 9°sedile. Cinque posizioni di blocco con antishock nella versione H24/ Syncro-Tilt with 20°backrest and 9°seat and five locking positions with antishock, only for H24 version.
3. Bracciolo regolabile in altezza con escursione di 15 mm in altezza e di 80 mm in larghezza/ Adjustable armrest 15 mm in height and 80 mm in depth.



2.



3.



1.



2.



3.

1. Regolazione in altezza 100 mm versioni 06 e 07/ Height adjustable 100 mm versions.

2. Il sedile è regolabile in profondità (di serie) in varie posizioni con escursione di 60 mm/ The seat is adjustable in depth (standard)

3. Regolazione in larghezza 38 mm versioni: 05, 06 e 07/ Width adjustable 38 mm versions: 05, 06 and 07.

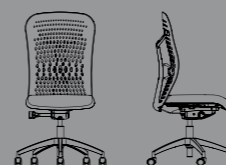






**SMARTBACK**

Design by Air Design  
Sedute Operative/ Task chairs



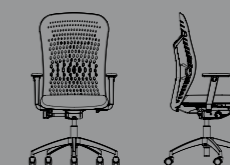
**PK1**

L 68 x W 68 x H 101 cm



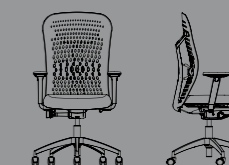
**PK2**

L 68 x W 68 x H 101 cm



**PK3**

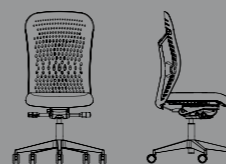
L 68 x W 68 x H 101 cm



**PK4**

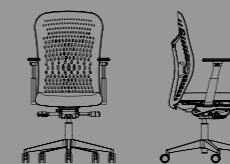
L 68 x W 68 x H 101 cm

**CERTIFICATA H24 - H24 CERTIFICATE**



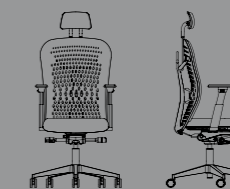
**PK10**

L 68 x W 68 X H 101 cm



**PK11**

L 68 x W 68 x H 101 cm



**PK12**

L 68 x W 68 x H 120 cm

Tutte le finiture, i tessuti, i meccanismi, le caratteristiche specifiche e gli accessori di ogni modello sono consultabili sul listino/  
All finishes, fabrics, mechanisms, specific features and accessories of each model are available on the price list.

**MATERIALI**

MATERIALI/ MATERIALS

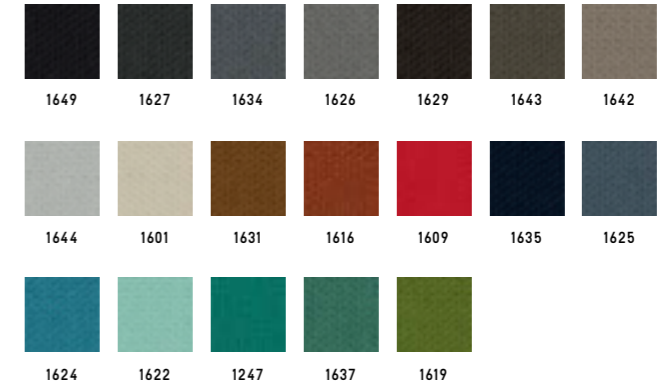


**GABRIEL**

**FELICITY**



1623

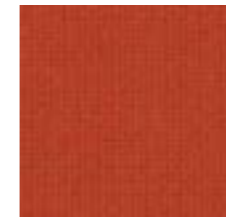


Categoria/ Category  
Composizione/ Composition  
Note/ Notes

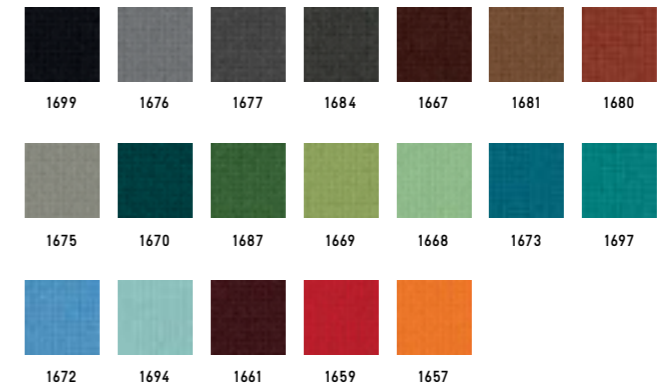
C  
100% polyester  
100% recycled fabric



**FAME**



1658



Categoria/ Category  
Composizione/ Composition

D  
95% New Zeland wool + 5% polyamide



**BREEZE FUSION**



1969



Categoria/ Category  
Composizione/ Composition

K  
88% New Zeland wool + 12% polyamide



GABRIEL

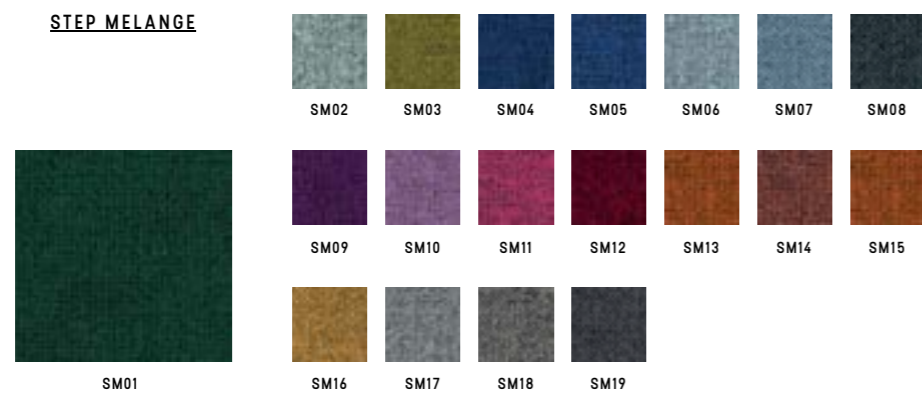
SAVOY



Categoria/ Category K  
Composizione/ Composition 100% Trevira CS



STEP MELANGE



Categoria/ Category D  
Composizione/ Composition 100% Trevira CS



**CAMIRA**

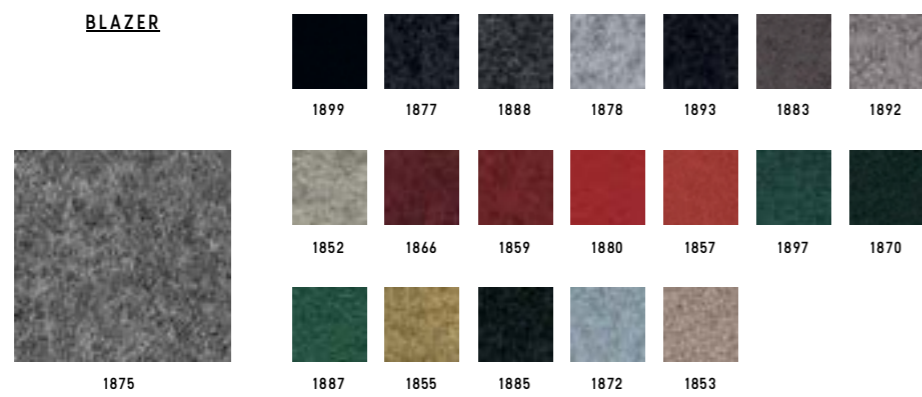
**RIVET**



Categoria/ Category **C**  
 Composizione/ Composition 100% reprove  
 Note/ Notes 100% recycled fabric



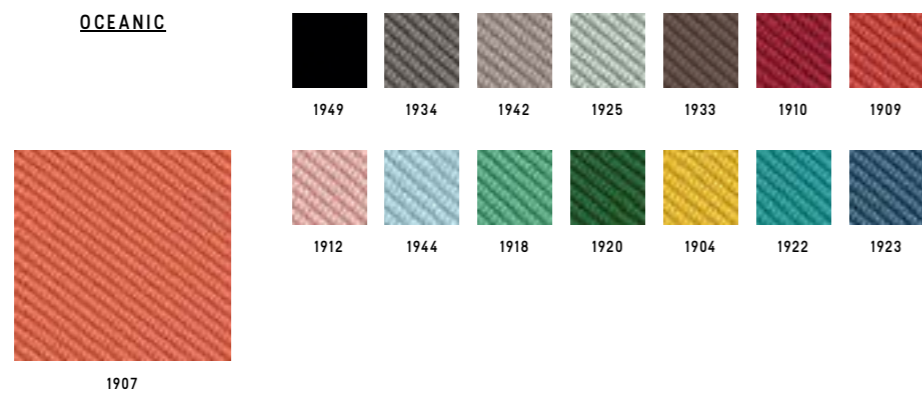
**BLAZER**



Categoria/ Category **K**  
 Composizione/ Composition 100% virgin wool



**OCEANIC**



Categoria/ Category **K**  
 Composizione/ Composition 100% post-consumer recycled polyester, including 50% SEAQUAL yarn



**KVADRAT**

**RELATE**



Categoria/ Category **D**  
 Composizione/ Composition 100% trevira CS  
 Note/ Notes 100% recycled fabric



**REMIX 3**



Categoria/ Category **K**  
 Composizione/ Composition 90% new wool worsted + 10% nylon



**RE-WOOL**

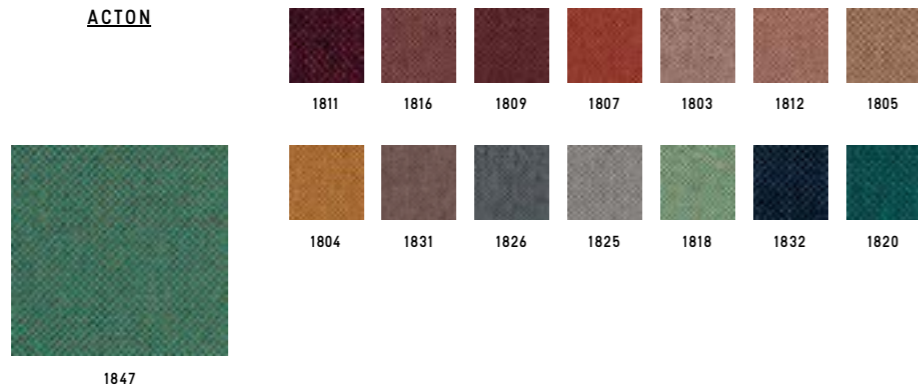


Categoria/ Category **K**  
 Composizione/ Composition 45% recycled wool + 45% new wool worsted + 10% nylon



**VESCOM**

**ACTON**



Categoria/ Category **D**  
 Composizione/ Composition 100% polyester



**LIMONTA**

**TRESIGALLO**



Categoria/ Category **K**  
 Composizione/ Composition 22% Acrylic + 22% wool + 22% polyester  
 13% cotton + 14% viscose + 17% wool



**G.S.**

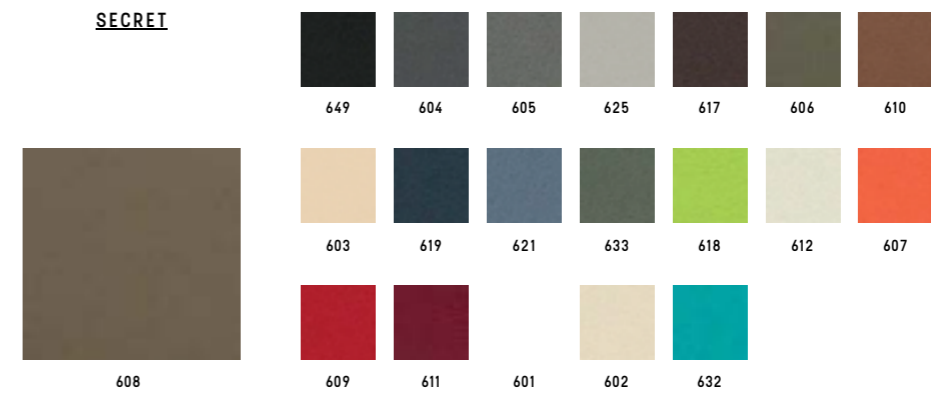
**SURROUND**



Categoria/ Category **B**  
 Composizione/ Composition 87,5% polyvinylchloride (PVC) + 12,5% cotton  
 Note/ Notes Antibacterial



**SECRET**



Categoria/ Category **C**  
 Composizione/ Composition 76% polyvinylchloride (PVC) + 2% polyurethane (PU) + 22% polysulfone (PES)



**GORGEUS**



Categoria/ Category **D**  
 Composizione/ Composition 100% poliestere FR

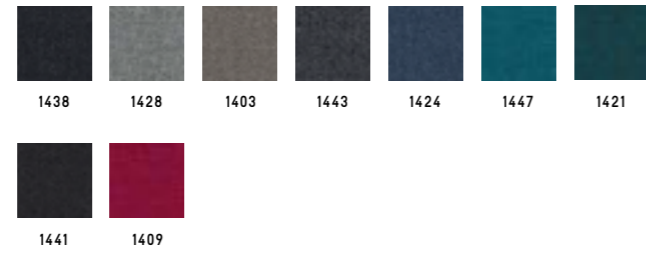


**CHIOCCARELLO**

**DISCO COEX**



1402



Categoria/ Category  
Composizione/ Composition

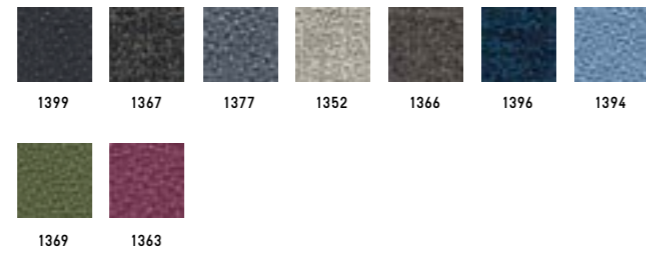
D  
70% cotton + 20% acrylic + 5% viscose  
5% linen, 0% formaldehyde



**EXPO**



1379



Categoria/ Category  
Composizione/ Composition  
Note/ Notes

B  
100% propitex Fr bacteriostatic  
Bacteriostatic



**MADRID**



L097



Categoria/ Category  
Composizione/ Composition

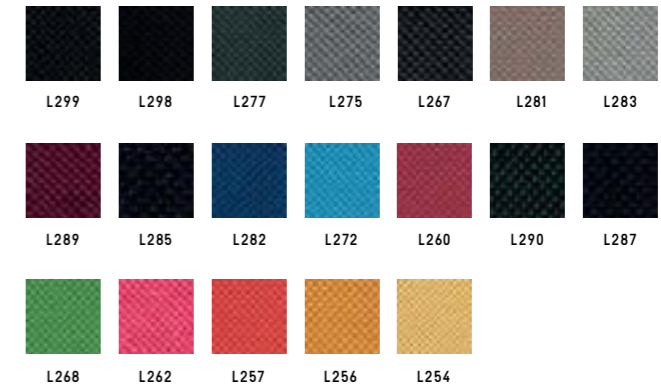
A  
100% polypropilene FR



**SALÒ**



L259



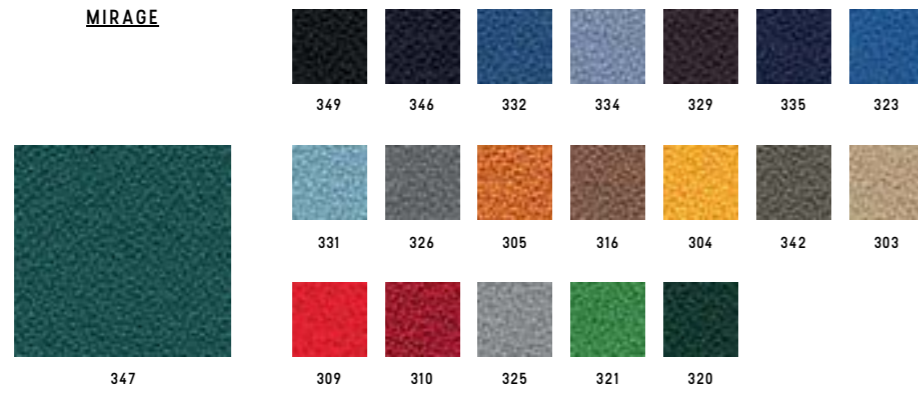
Categoria/ Category  
Composizione/ Composition

B  
100% polyester FR



**PUGI**

**MIRAGE**

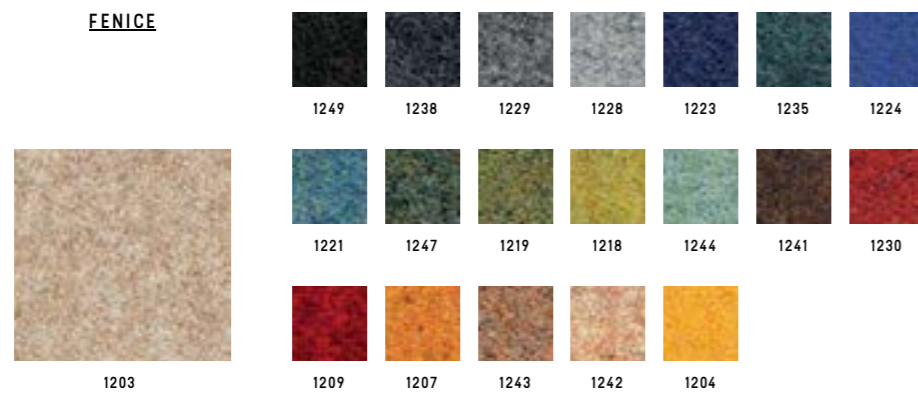


Categoria/ Category  
Composizione/ Composition

**B**  
100% polyester FR



**FENICE**



Categoria/ Category  
Composizione/ Composition

**C**  
75% wool + 25% polyamide



**BISENTIUM**



Categoria/ Category  
Composizione/ Composition

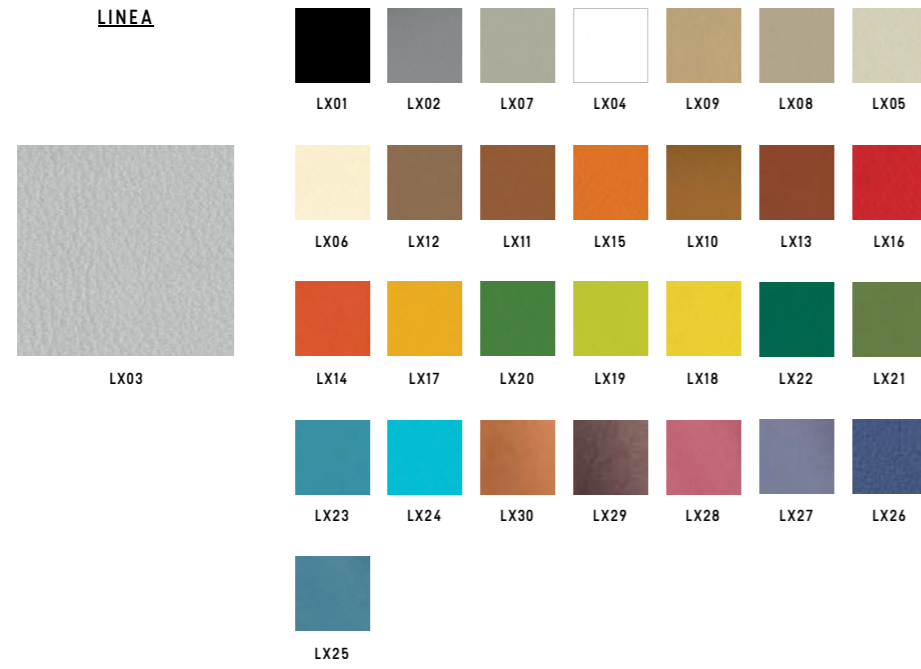
**K**  
30% wool + 28% polyester + 26% polyamide  
16% silk





**MASTROTTO**

**LINEA**



Categoria/ Category  
 Composizione/ Composition

TOP (pieno fiore)  
 Bovine leather



**ZENITH**



Categoria/ Category  
 Composizione/ Composition

TP  
 Bovine leather



RETI TRIDIMENSIONALE

RHYTHM



TAZ TBI TBL TGR TNE TRO TTO



TAN

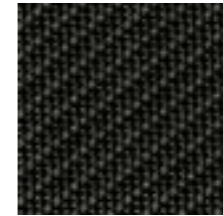


TVD

Categoria/ Category D  
 Composizione/ Composition 100% polyester



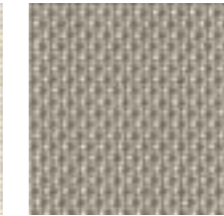
CATEGORIA L/  
CATEGORY L



849



801



825

Categoria/ Category L  
 Composizione/ Composition 73% PVC + 27% poliestere/ 73% PVC + 27% polyester   
 849-801: Light, Nulite, Smartlight, Pop,  
 825: Light, Nulite

CATEGORIA R/  
CATEGORY R



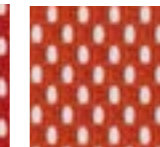
NE BI VD BL



GR



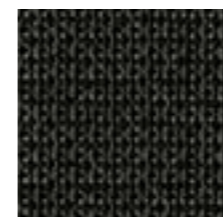
RO



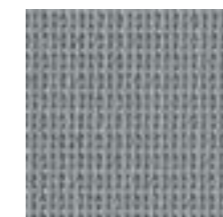
AR

Categoria/ Category R  
 Composizione/ Composition 100% poliestere/ 100% polyester   
 Solo per Aire Jr, Post, Pop, Switch/  
 Only for Aire Jr, Post, Pop, Switch

CATEGORIA Z/  
CATEGORY Z



NE



GR

Categoria/ Category Z  
 Composizione/ Composition 60% PVC + 40% poliestere/ 60% PVC + 40% polyester   
 Solo per Overtime Evo, Extralight/  
 Only for Overtime Evo, Extralight



FINITURE METALLI/  
METAL FINISHES



Categoria/ Category

FE

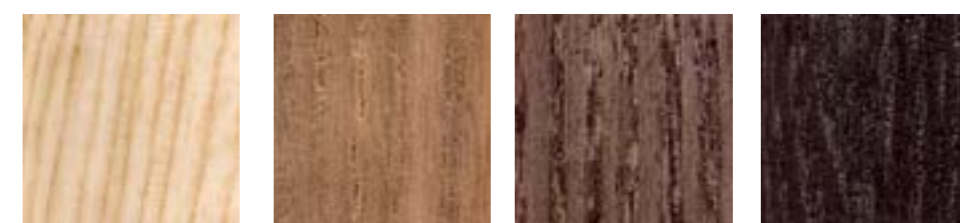
PLASTICHE/  
PLASTICS



Categoria/ Category

PE

LEGNO/  
WOOD



Faggio/ Beech

Rovere/ Oak

Noce/ Walnut

Wenge'

Standard

A progetto/ For customized projects

Categoria/ Category

LE

Composizione/ Composition

Legno massello di faggio in colore naturale/ Solid beech wood natural finish.  
Legno massello di rovere con verniciatura di tipo acrilico in vari colori/ Solid oak wood natural finishes.