



The Place for Ideas

ITALIA

Design by Favaretto & Partners

Stile sinuoso in un contesto di silenziosa creatività. Italia racconta la lineare determinazione e l'avvolgente accoglienza di una seduta pensata per ambienti di lavoro dal design minimal e ricercato. Disponibile in tre varianti, Italia coccola il corpo con le sue curve modellate e le cuciture a vista regalando personalità, stabilità e comfort alla quotidianità della persona che la utilizza.

Sinuous allure in creative silence. Italia is the story of linear determination and a welcoming embrace for refined, minimalist offices. Available in three different versions, Italia cocoons the body with its curves while visible seams lend a sense of personality, stability and comfort to daily life.





ITALIA
Modello IT27/ IT27 model





ITALIA

Modelli IT46 e IT41/ IT46 and IT41 models





ITALIA

Modello IT2/ IT2 model



ITALIA
Modello IT7/ IT7 model



ITALIA
Modello IT6/ IT6 model





1.



2.

1. Meccanismo synchron con antishock e traslatore/ Synchronized mechanism with antishock and sliding seat.

2. Meccanismo synchron autopessante con antishock e traslatore/ Weight-sensitive synchronized mechanism with antishock and sliding seat.



1.



2.

1. L'altezza della sedia si regola girando l'apposita leva sia per il meccanismo synchron sia autopesante/
The seat height is adjusted by turning the provided lever for both mechanisms.

2. Il movimento di schienale e sedile è sincronizzato con 16° di oscillazione per lo schienale e 4° per il sedile/
The backrest and the seat are synchronized with 16° of inclination for the backrest and 4° for the seat.







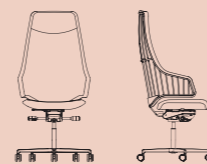




ITALIA

Design by Favaretto & Partners
Sedute direzionali/ Executive chairs

Steel



IT1
L 69 x W 66 x H 125 cm



IT5
L 62 x W 64 x H 125 cm

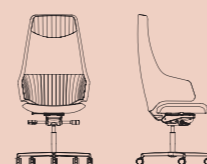


IT6
L 69 x W 66 x H 98 cm



IT10
L 62 x W 63 x H 98 cm

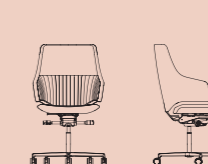
Extra soft



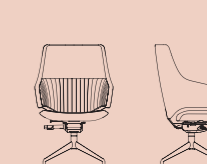
IT21
L 69 x W 66 x H 125 cm



IT25
L 62 x W 64 x H 125 cm

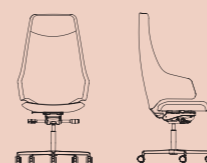


IT26
L 69 x W 66 x H 98 cm

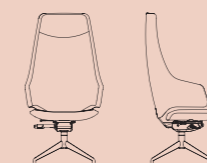


IT30
L 62 x W 63 x H 98 cm

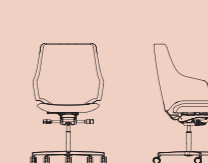
Flat



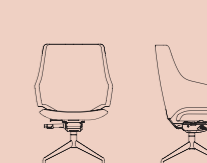
IT41
L 69 x W 66 x H 125 cm



IT45
L 62 x W 64 x H 125 cm



IT46
L 69 x W 66 x H 98 cm

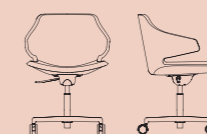


IT50
L 62 x W 63 x H 98 cm

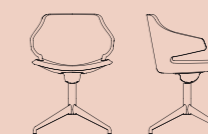
Meraviglia



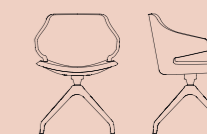
MV1
L 55 x W 56 x H 80 cm



MV3
L 55 x W 54 x H 71 cm



MV4
L 55 x W 54 x H 80 cm



MV8
L 55 x W 54 x H 80 cm

Tutte le finiture, i tessuti, i meccanismi, le caratteristiche specifiche e gli accessori di ogni modello sono consultabili sul listino/
All finishes, fabrics, mechanisms, specific features and accessories of each model are available on the price list.

MATERIALI

MATERIALI/ MATERIALS



GABRIEL

FELICITY

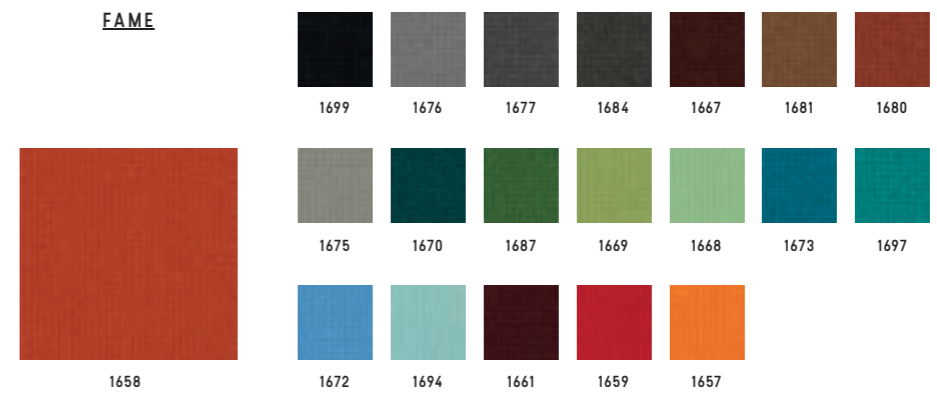


Categoria/ Category
Composizione/ Composition
Note/ Notes

C
100% polyester
100% recycled fabric



FAME



Categoria/ Category
Composizione/ Composition

D
95% New Zeland wool + 5% polyamide



BREEZE FUSION



Categoria/ Category
Composizione/ Composition

K
88% New Zeland wool + 12% polyamide



GABRIEL

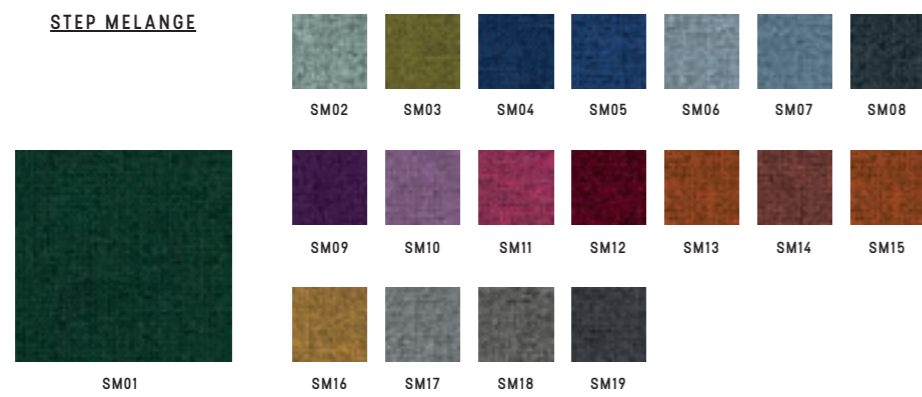
SAVOY



Categoria/ Category K
Composizione/ Composition 100% Trevira CS



STEP MELANGE

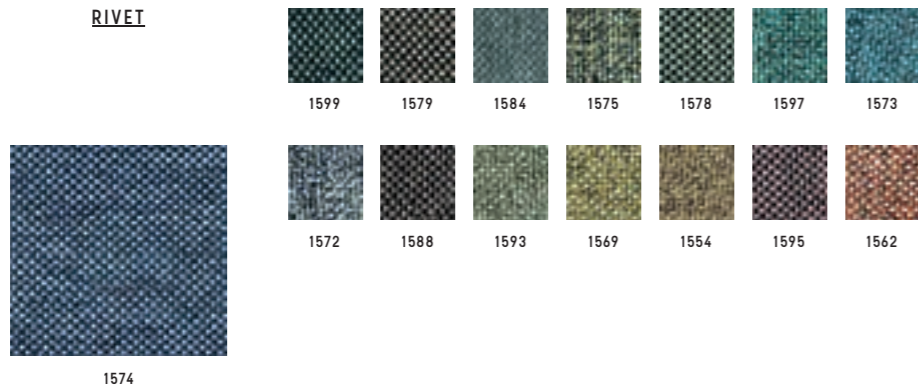


Categoria/ Category D
Composizione/ Composition 100% Trevira CS



CAMIRA

RIVET



Categoria/ Category C
 Composizione/ Composition 100% reprove
 Note/ Notes 100% recycled fabric



KVADRAT

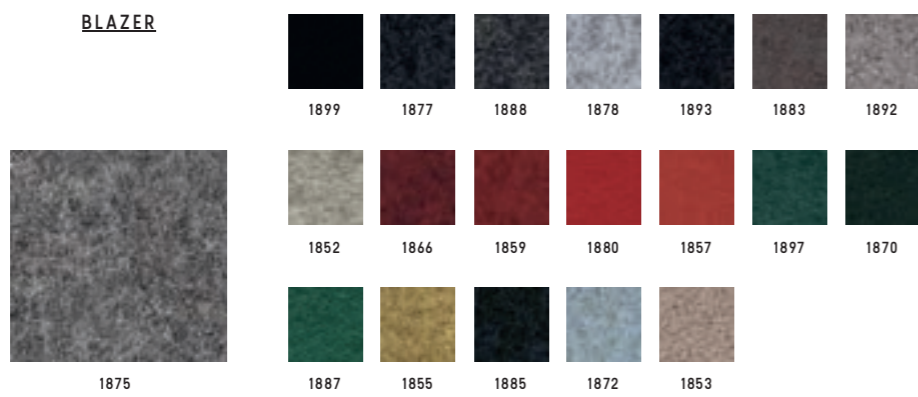
RELATE



Categoria/ Category D
 Composizione/ Composition 100% trevira CS
 Note/ Notes 100% recycled fabric



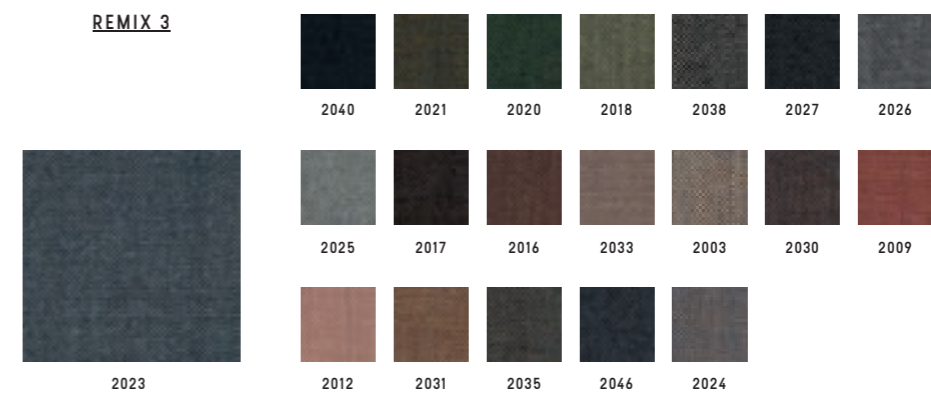
BLAZER



Categoria/ Category K
 Composizione/ Composition 100% virgin wool



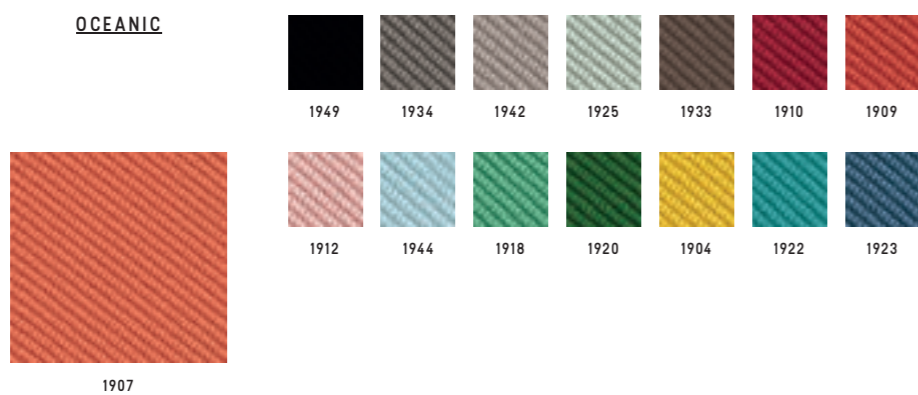
REMIX 3



Categoria/ Category K
 Composizione/ Composition 90% new wool worsted + 10% nylon



OCEANIC



Categoria/ Category K
 Composizione/ Composition 100% post-consumer recycled polyester, including 50% SEAQUAL yarn



RE-WOOL

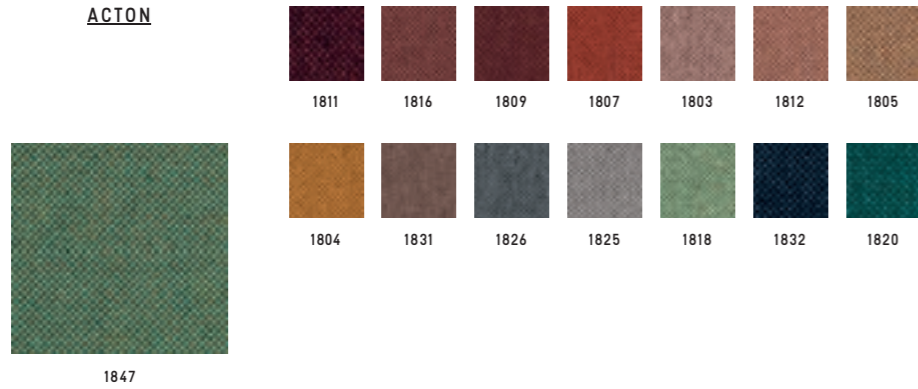


Categoria/ Category K
 Composizione/ Composition 45% recycled wool + 45% new wool worsted + 10% nylon



VESCOM

ACTON



Categoria/ Category **D**
 Composizione/ Composition 100% polyester



LIMONTA

TRESIGALLO

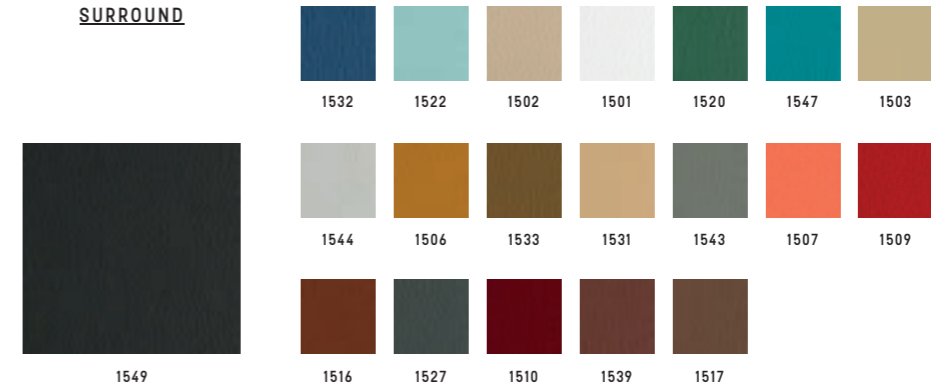


Categoria/ Category **K**
 Composizione/ Composition 22% Acrylic + 22% wool + 22% polyester
 13% cotton + 14% viscose + 17% wool



G.S.

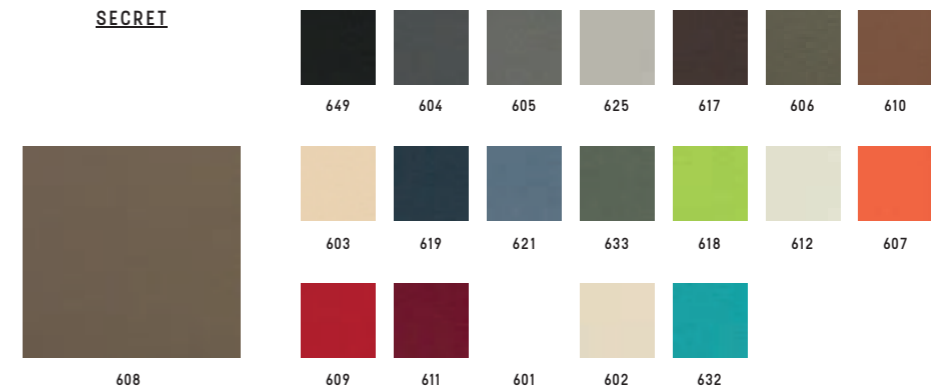
SURROUND



Categoria/ Category **B**
 Composizione/ Composition 87,5% polyvinylchloride (PVC) + 12,5% cotton
 Note/ Notes Antibacterial



SECRET



Categoria/ Category **C**
 Composizione/ Composition 76% polyvinylchloride (PVC) + 2% polyurethane (PU) + 22% polysulfone (PES)



GORGEUS



Categoria/ Category **D**
 Composizione/ Composition 100% poliestere FR



CHIOCCARELLO

DISCO COEX



1402



1438 1428 1403 1443 1424 1447 1421



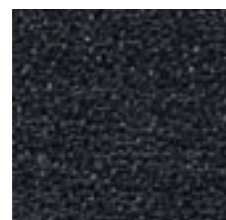
1441 1409

Categoria/ Category
Composizione/ Composition

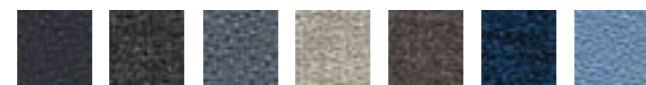
D
70% cotton + 20% acrylic + 5% viscose
5% linen, 0% formaldehyde



EXPO



1379



1399 1367 1377 1352 1366 1396 1394



1369 1363

Categoria/ Category
Composizione/ Composition
Note/ Notes

B
100% propitex Fr bacteriostatic
Bacteriostatic



MADRID



L097



L099 L077 L075 L088 L079 L059 L061



L060 L095 L067 L085 L074 L096 L082



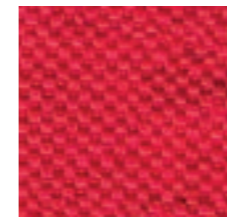
L073 L069 L054 L068 L087

Categoria/ Category
Composizione/ Composition

A
100% polypropilene FR



SALÒ



L259



L299 L298 L277 L275 L267 L281 L283



L289 L285 L282 L272 L260 L290 L287



L268 L262 L257 L256 L254

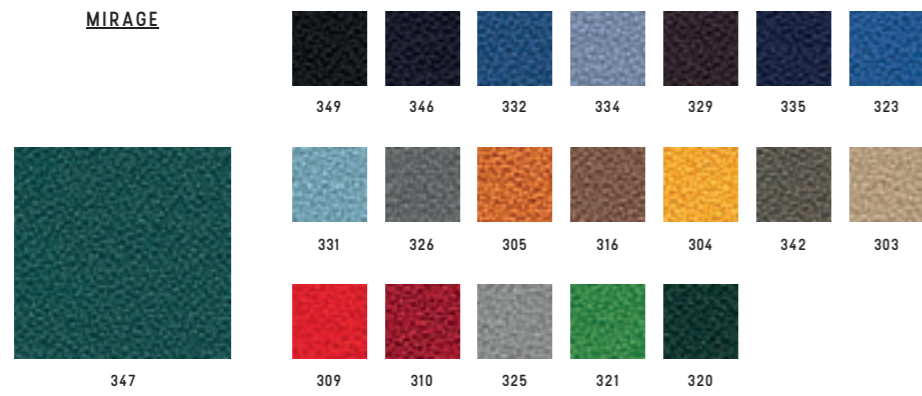
Categoria/ Category
Composizione/ Composition

B
100% polyester FR



PUGI

MIRAGE

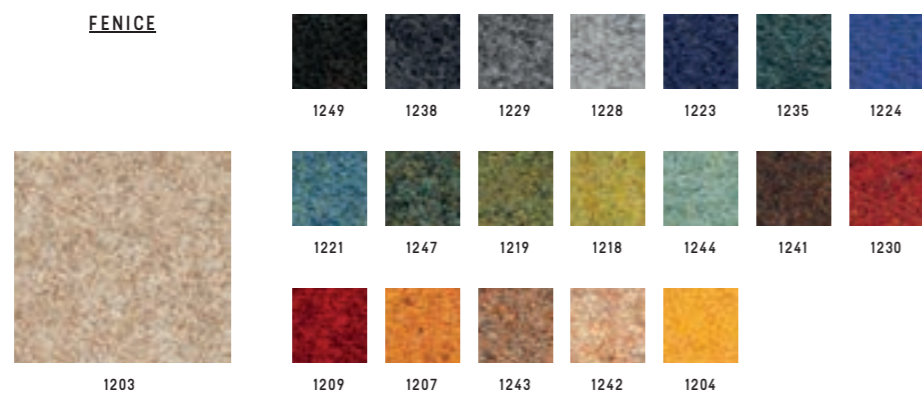


Categoria/ Category
Composizione/ Composition

B
100% polyester FR



FENICE



Categoria/ Category
Composizione/ Composition

C
75% wool + 25% polyamide



BISENTIUM



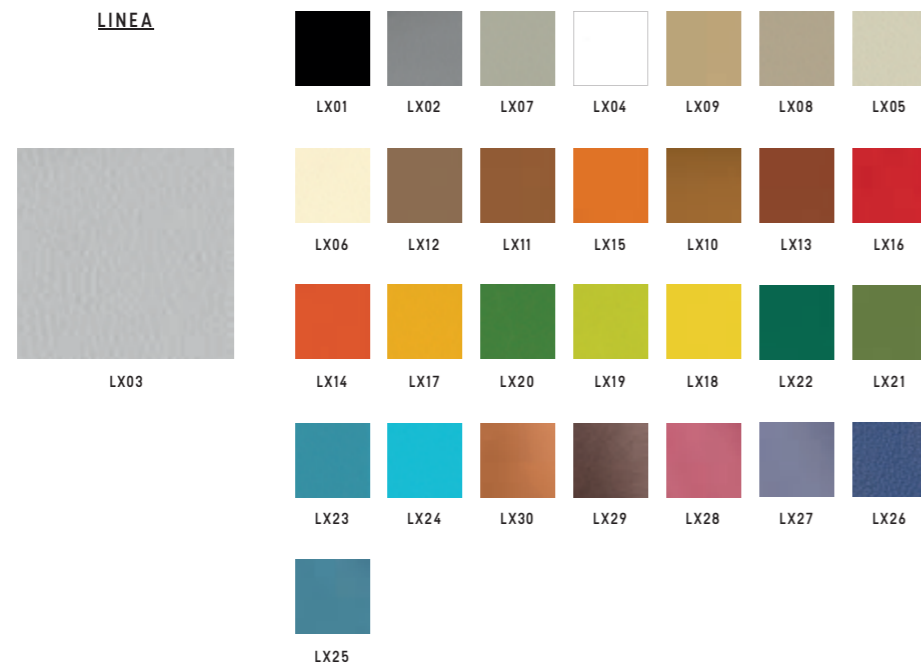
Categoria/ Category
Composizione/ Composition

K
30% wool + 28% polyester + 26% polyamide
16% silk



MASTROTTO

LINEA



Categoria/ Category
Composizione/ Composition

TOP (pieno fiore)
Bovine leather



ZENITH



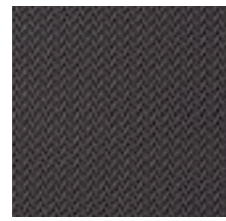
Categoria/ Category
Composizione/ Composition

TP
Bovine leather



RETI TRIDIMENSIONALE

RHYTHM

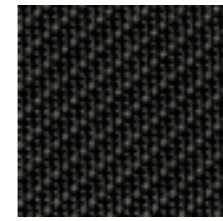


TAN

Categoria/ Category D
 Composizione/ Composition 100% polyester



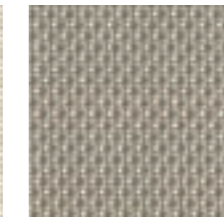
CATEGORIA L/
 CATEGORY L



849



801

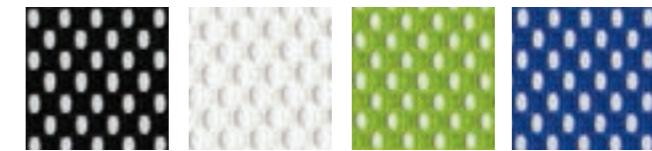


825

Categoria/ Category L
 Composizione/ Composition 73% PVC + 27% poliestere/ 73% PVC + 27% polyester
 849-801: Light, Nulite, Smartlight, Pop,
 825: Light, Nulite



CATEGORIA R/
 CATEGORY R

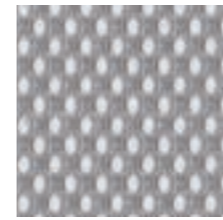


NE

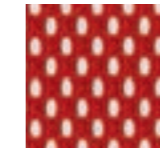
BI

VD

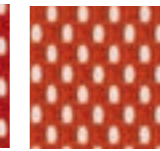
BL



GR



RO

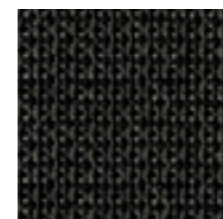


AR

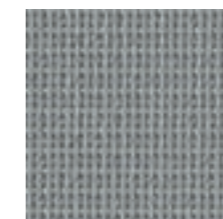
Categoria/ Category R
 Composizione/ Composition 100% poliestere/ 100% polyester
 Solo per Aire Jr, Post, Pop, Switch/
 Only for Aire Jr, Post, Pop, Switch



CATEGORIA Z/
 CATEGORY Z



NE



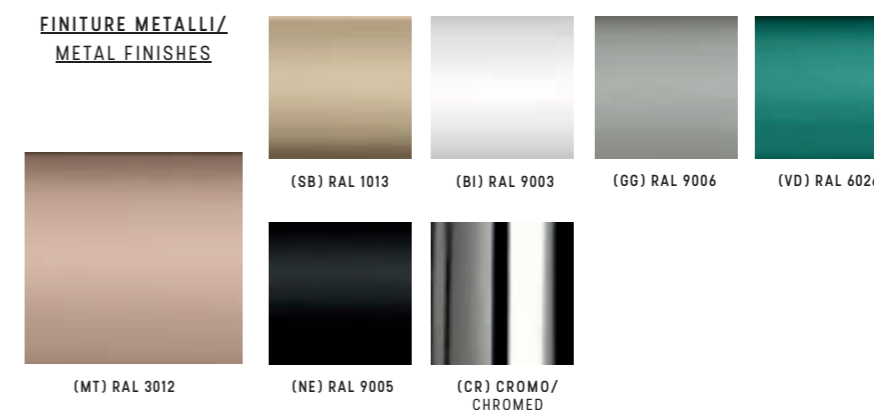
GR

Categoria/ Category Z
 Composizione/ Composition 60% PVC + 40% poliestere/ 60% PVC + 40% polyester
 Solo per Overtime Evo, Extralight/
 Only for Overtime Evo, Extralight





FINITURE METALLI/
METAL FINISHES



Categoria/ Category

FE

PLASTICHE/
PLASTICS



Categoria/ Category

PE

LEGNO/
WOOD



Faggio/ Beech

Rovere/ Oak

Noce/ Walnut

Wenge'

Standard

A progetto/ For customized projects

Categoria/ Category

LE

Composizione/ Composition

Legno massello di faggio in colore naturale/ Solid beech wood natural finish.
Legno massello di rovere con verniciatura di tipo acrilico in vari colori/ Solid oak wood natural finishes.